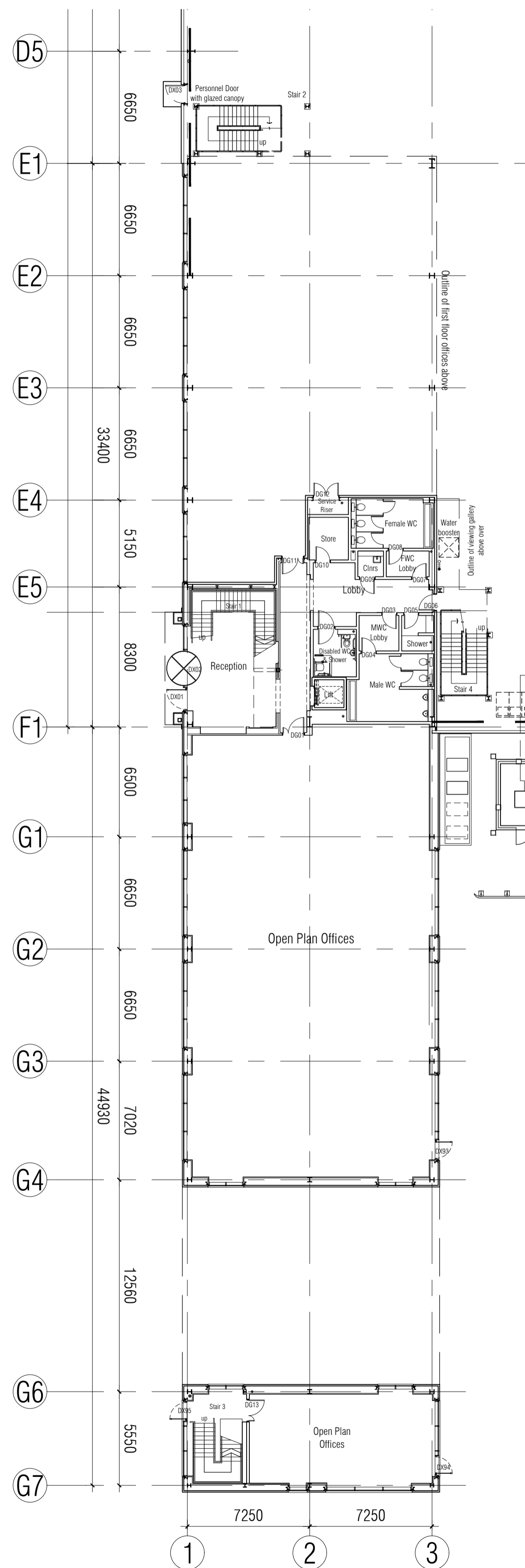
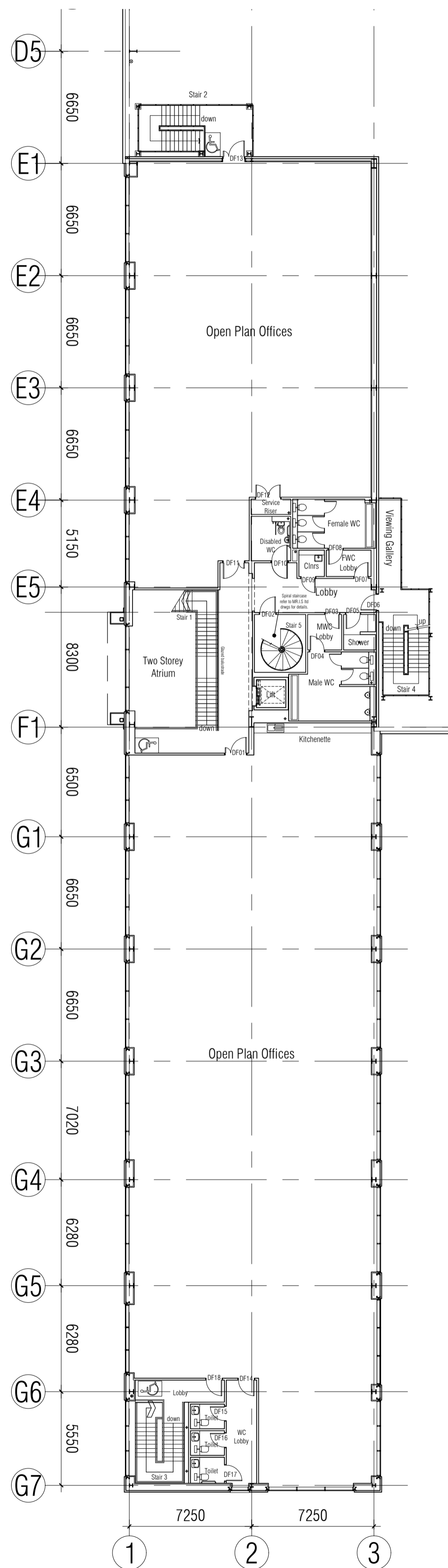


notes  
 this drawing and design is the copyright of aja architects llp and must not be reproduced in part or in whole without prior written consent. contractors must verify all dimensions on site before commencing work or preparing shop drawings. If in doubt ASK.  
 Where this drawing contains any Ordnance Survey mapping material, it has been reproduced under license number 100052278.  
 Ordnance Survey © Crown copyright

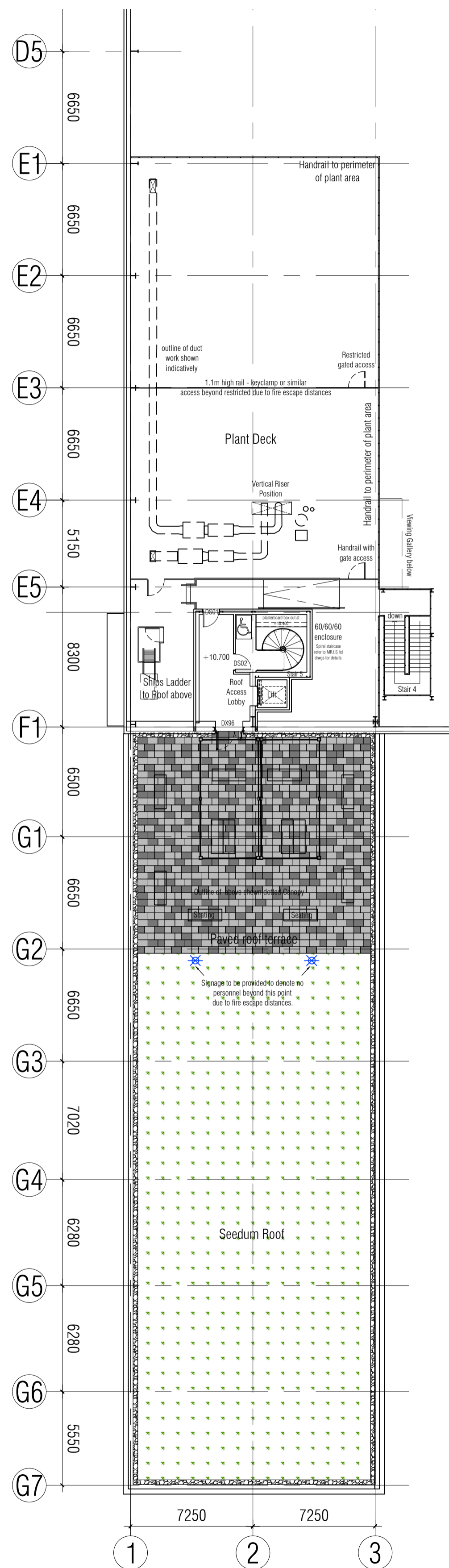
ALL STEELWORK & CLADDING SHOWN INDICATIVELY AND SUBJECT TO DETAILED DESIGN BY SPECIALIST SUB-CONTRACTORS



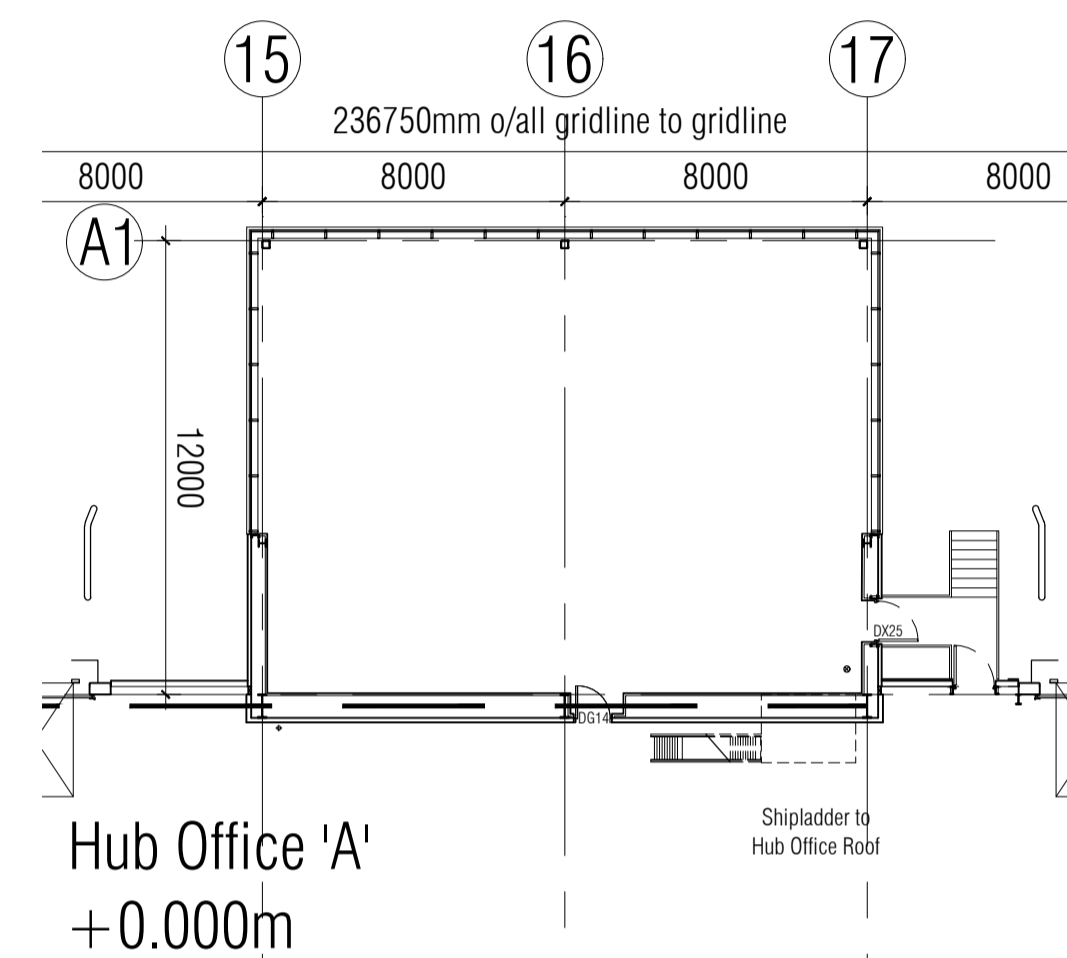
Ground Floor Plan  
 +0.000m



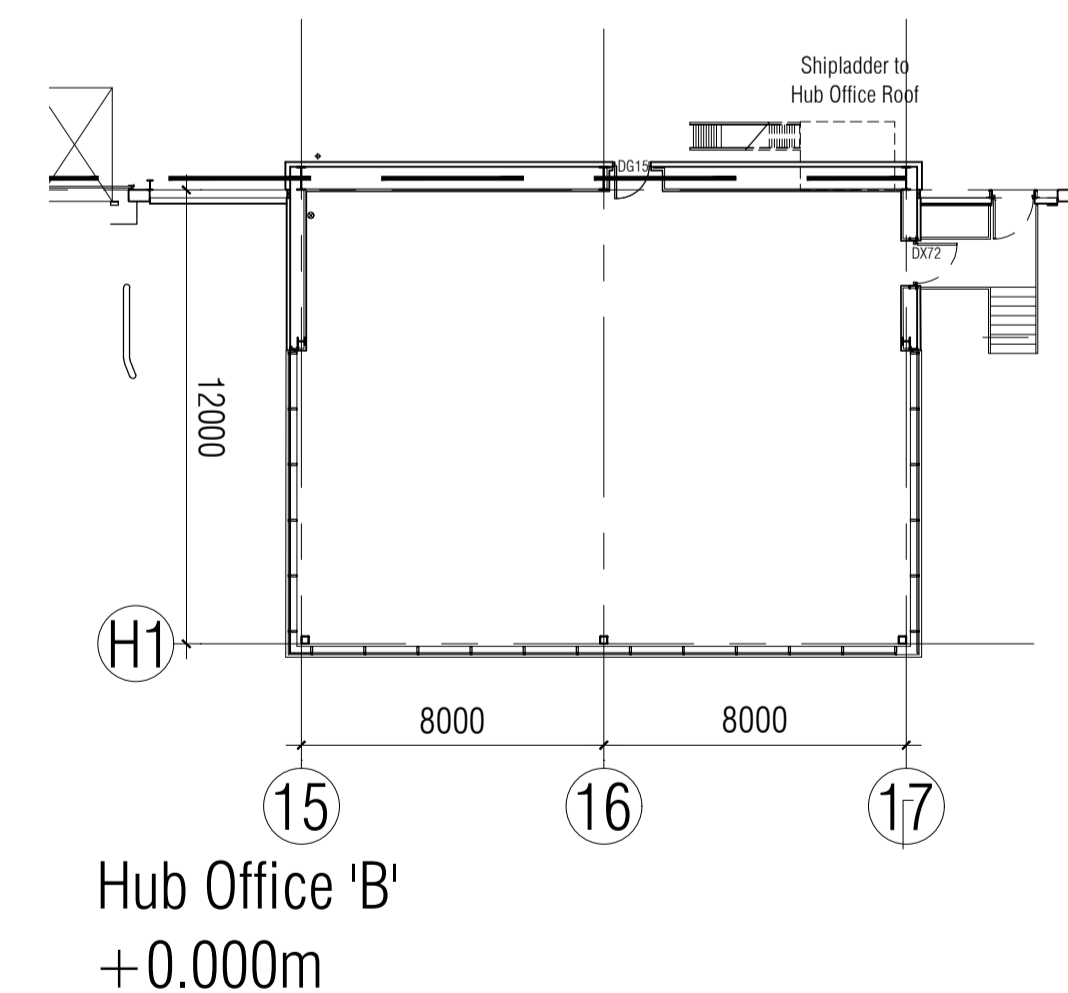
First Floor Plan  
 +6.400m



Second Floor Plan  
 +10.400m



Hub Office 'A'  
 +0.000m



Hub Office 'B'  
 +0.000m

C082/07/21	Record Issue	pk
C0722/06/21	Wall recess amended	pk
C0618/06/21	Wall recess added to reception as instructed by Winvic.	pk
C0519/03/21	Spiral Staircase amended to suit sub-contractor design.	kt
C0419/03/21	DX96 amended & glass balustrade added.	kt
C0315/02/21	Lobby amended to second floor	kt
C0202/02/21	Staircase 4 reconfigured.	kt
C0126/01/21	General updates including stair 5 re-located, second floor layout revised	kt/up
P0323/10/20	Updated following variation as drawing 5984 - 122 L	up
P0208/10/20	Updated following variation as drawing 5984 - 122 E	up
P0122/09/20	Preliminary Issue	up
no.	date	revision
		by



aja architects llp  
 1170 Elliott Court  
 Herald Avenue  
 Coventry Business Park  
 COVENTRY CV5 6UB  
 E: aja@aja-architects.com  
 W: www.aja-architects.com  
AJA Architects is the trading name of AJA Architects Consulting Limited (a limited company no. 1069279) and AJA Architects LLP (a limited liability partnership registered in England no. OC306721)



project  
 Plot 9  
 Central Park  
 Severnside  
 Bristol

Office Plans

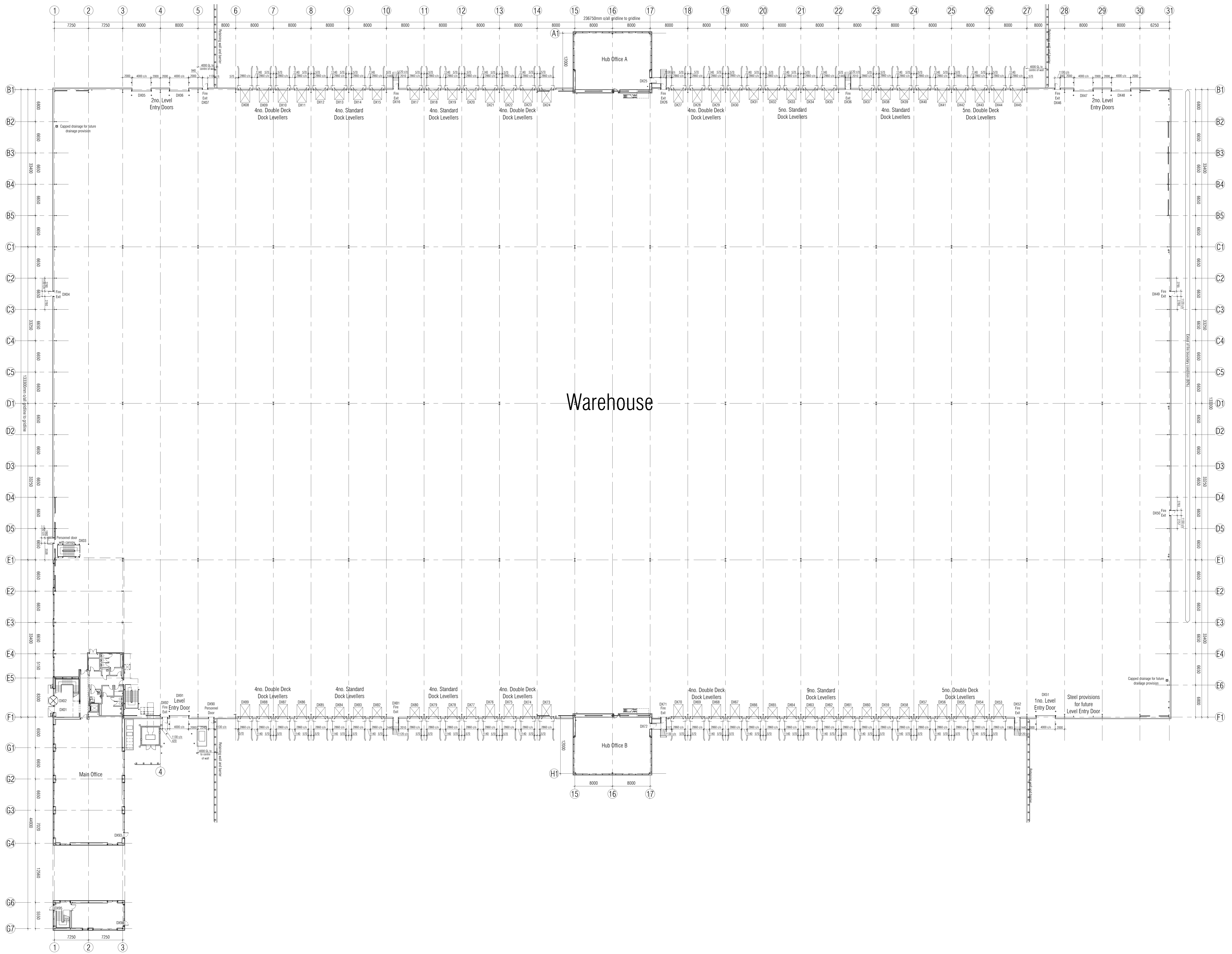
scale 1:200 @ A1 drawn up

checked mjl date 07/01/20

no

P20024-AJA-BR-ZZ-DR-A-0021 C08

RECORD



notes  
 the drawing and design is the copyright of aja architects ip and must not be reproduced in part or in whole without prior written consent. Copyright is the property of aja architects ip and shall remain the property of aja architects ip. Where this drawing contains any Ordnance Survey mapping material, it has been reproduced under license number 100022716. Ordnance Survey © Crown Copyright  
**EXTENT OF FIRE BOUNDARY CONDITION TO BE AGREED WITH BUILDING CONTROL**  
**ALL STEELWORK & CLADDING SHOWN INDICATIVELY AND SUBJECT TO DETAILED DESIGN BY SPECIALIST SUB-CONTRACTORS**

Warehouse

C04	02/07/21	Record Issue	pk
C03	20/04/21	Incoming services amended	kt
C02	15/02/21	Door DX12 relocated	kt
C01	05/02/21	Staircase 4 reconfigured	kt
P05	01/02/21	CA11 fascias omitted on GL 31-81	pk
P04	15/10/20	Updated following variation as drawings 5786 - 121 E & 122 Rev L	up
P03	07/10/20	Updated following variation as drawing 5786 - 121 D	up
P02	25/09/20	Chd dims revised. Setting out dims added	up
P01	22/09/20	Preliminary Issue	up
no.	date	revision	by



aja architects ip  
 1170 Elliott Court  
 Herold Avenue  
 Coventry Business Park  
 Coventry CV5 6UB  
 T: 024 7625 3200  
 F: 024 7625 3210  
 E: aja@aja-architects.com  
 W: www.aja-architects.com  
aja architects ip is the trading name of aja architects ip limited, a limited liability company registered in England no. 10407701 and aja architects ip limited is a limited liability company registered in England no. 00320715



project  
**Plot 9**  
 Central Park  
 Severnside  
 Bristol

Building Plan

scale 1:250 @ A0 drawn up  
 checked mjl date 07/01/20  
 no

P20024-AJA-BR-00-DR-A-0020 C04  
 RECORD

GROUND FLOOR PLAN